

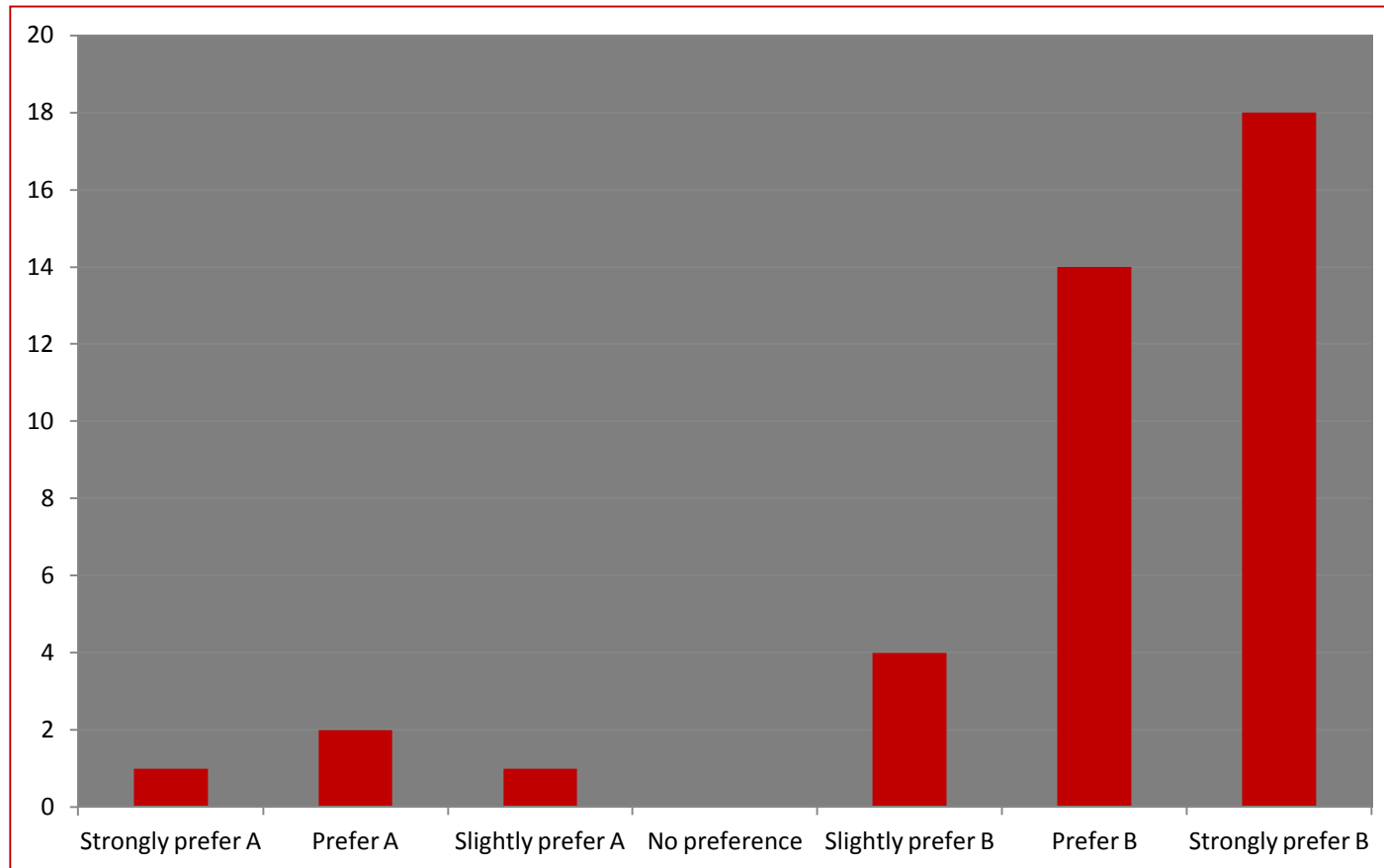
Hartest Neighbourhood Plan

Options Workshop Outcomes

March 2016

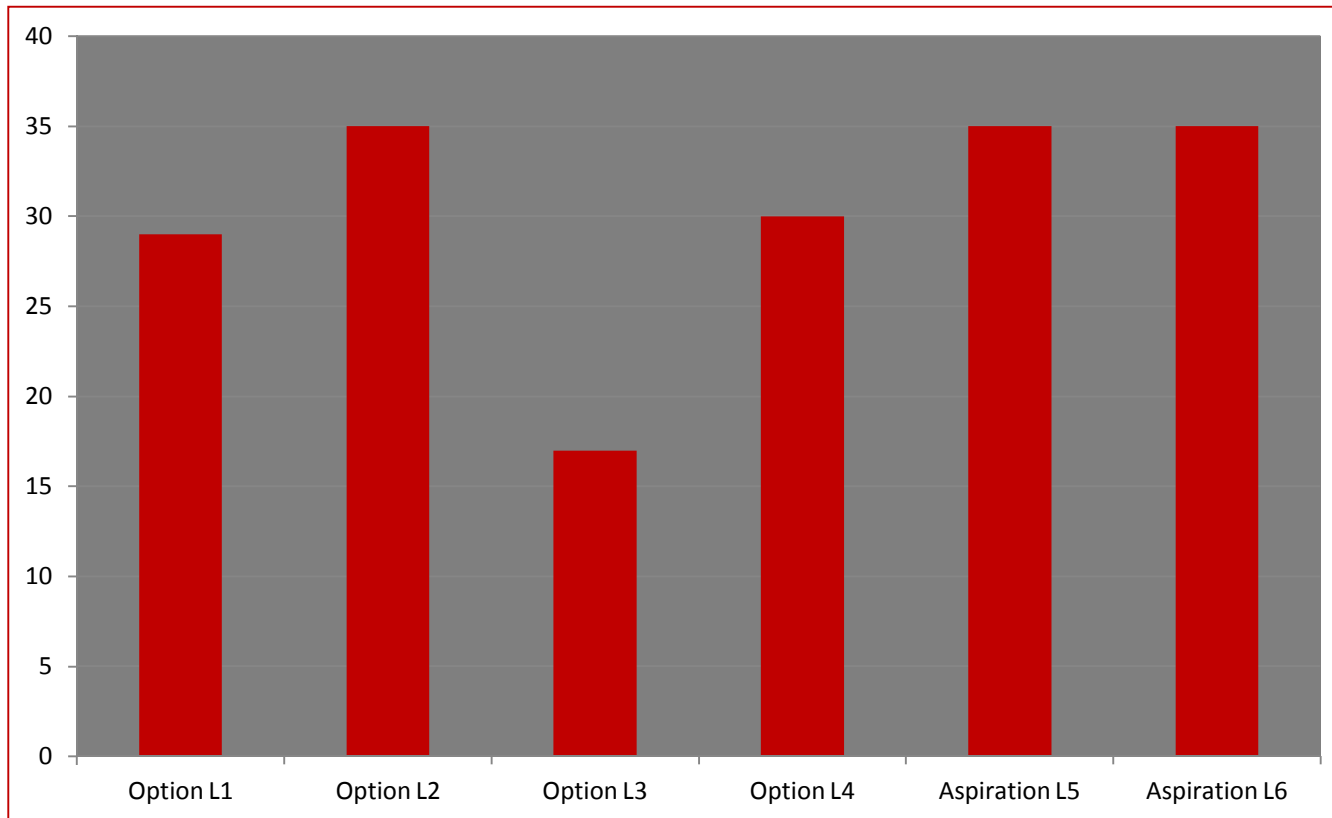
An Environmental led or Housing led neighbourhood plan?

- A)** Focus on delivering more homes to increase the population of Hartest without having regard to the local natural and historic environment
- B)** Allow the historic and natural environment to guide the amount and location of new homes in Hartest



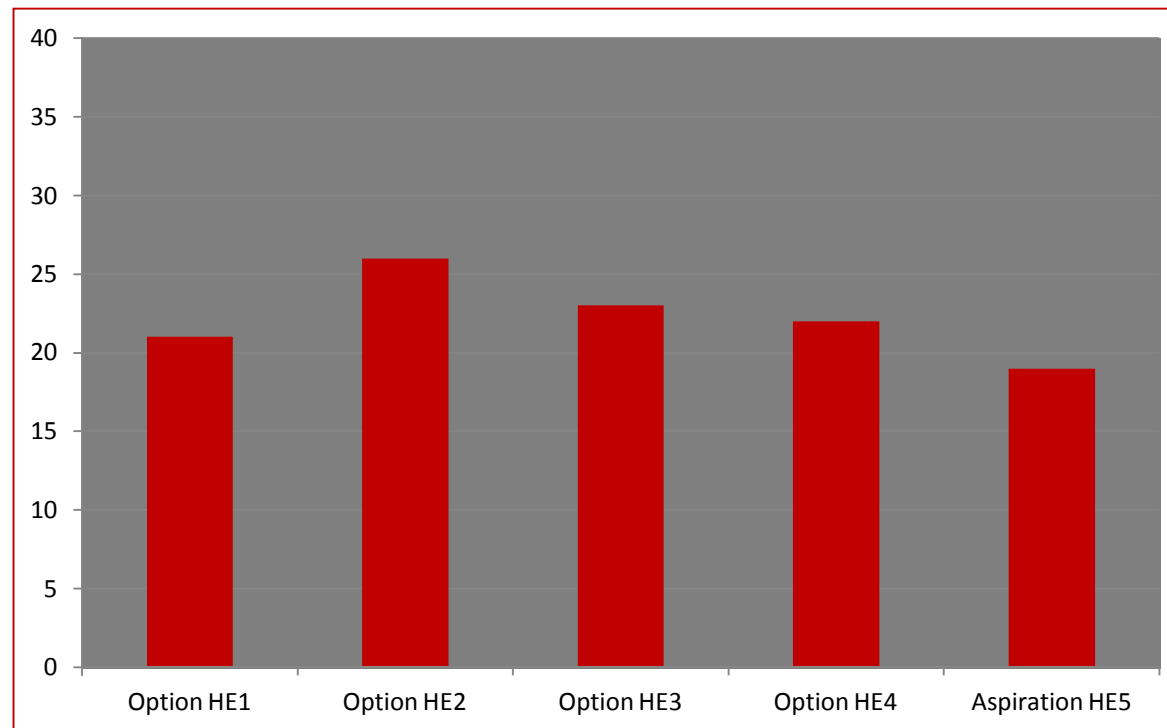
Objective I - Conserve and enhance the landscape, biodiversity and natural habitats

Option L1	Review Special Landscape Area boundary to match field boundaries
Option L2	Define Important Views that need to be protected from development.
Option L3	Ensure that distinct built up areas of the village remain separate, particularly the gap between Cross Green and the main part of the village
Option L4	Identify important open areas in the NP that should be protected from development
Aspiration L5	Promote projects around the parish that increase the amount of natural habitat.
Aspiration L6	Promote additional tree planting



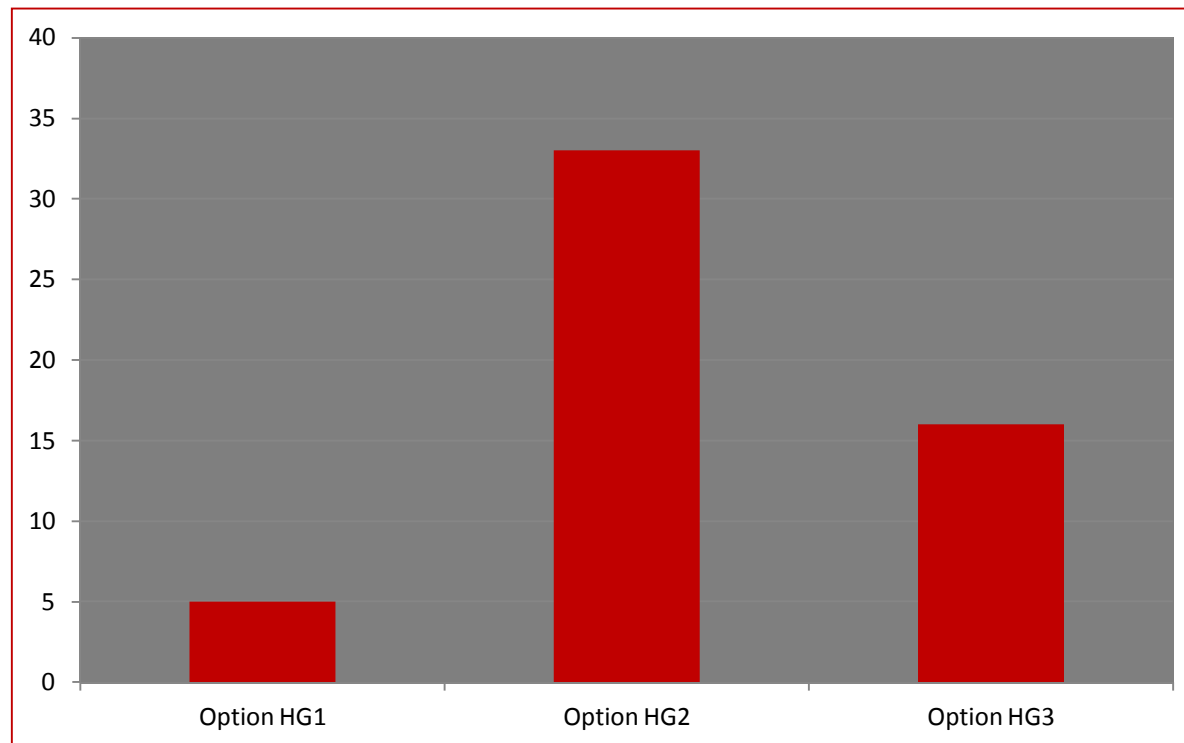
Objective 2 - Protect and enhance the historic environment

Option HE1	Identify non-designated areas and features within the conservation area that should be protected due to their contribution to the setting of listed buildings and the historic environment.
Option HE2	In addition to the landscape views, identify views that are important to the setting of the conservation area that should be protected from inappropriate development.
Option HE3	Identify additional features, such as walls, hedges and trees that are important to the character and appearance of the village and seek their protection.
Option HE4	Do not define areas or features for protection and consider the impact on character and features at the time of any planning application.
Aspiration HE5	Get overhead wires on the Green put underground.



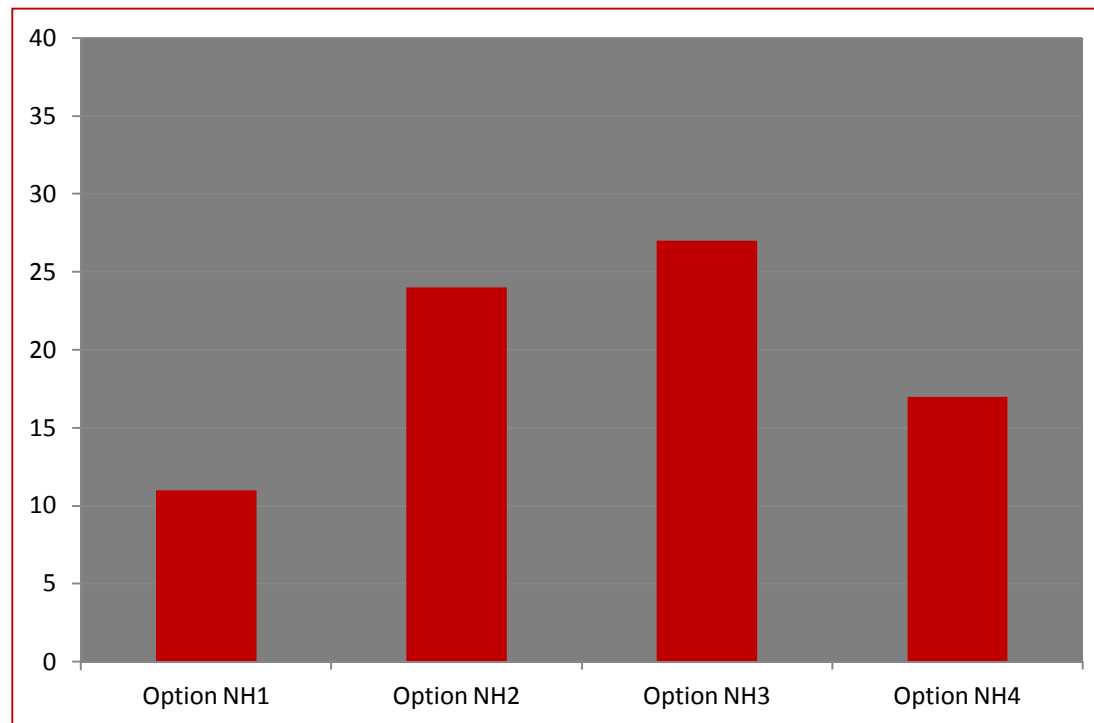
Objective 3 - Manage the provision of housing, including affordable housing, to meet identified needs

I. Housing Growth	
Option HG1	Don't identify the minimum number of new homes that should be built in the village in the plan period but rely on the Babergh Core Strategy to guide the amount of development
Option HG2	Plan for a minimum number of new homes that should be built in the village in the plan period, based on the village designation of a Hinterland Village in the Babergh Core Strategy.
Option HG3	Plan for an increased level of housing growth than has been experienced in recent years



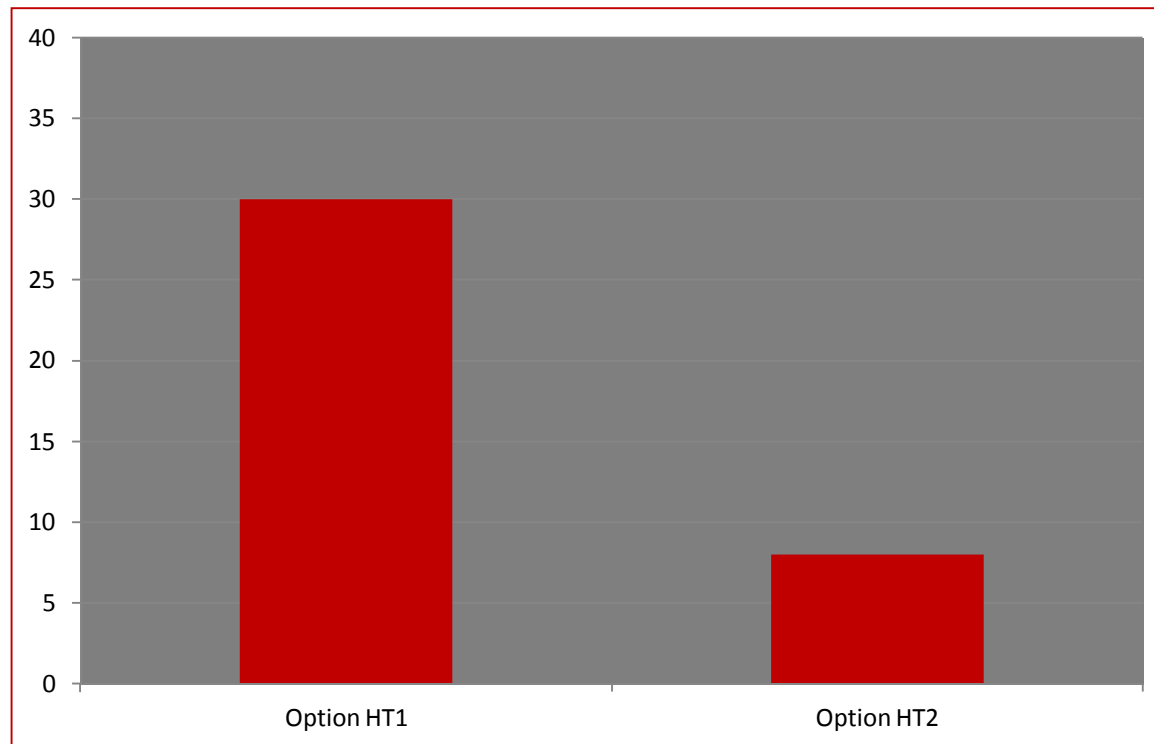
Objective 3 - Manage the provision of housing, including affordable housing, to meet identified needs

2. New Homes Location	
Option NH1	Allow new homes to come forward within the context of existing local plan policies CS11 and CS15
Option NH2	Provide a new policy framework for the location of new homes in the village based on environmental capacity
Option NH3	Identify sufficient sites to deliver the planned housing need (at least 22 new homes)
Option NH4	Review and extend the area covered by the Built-up Area Boundary



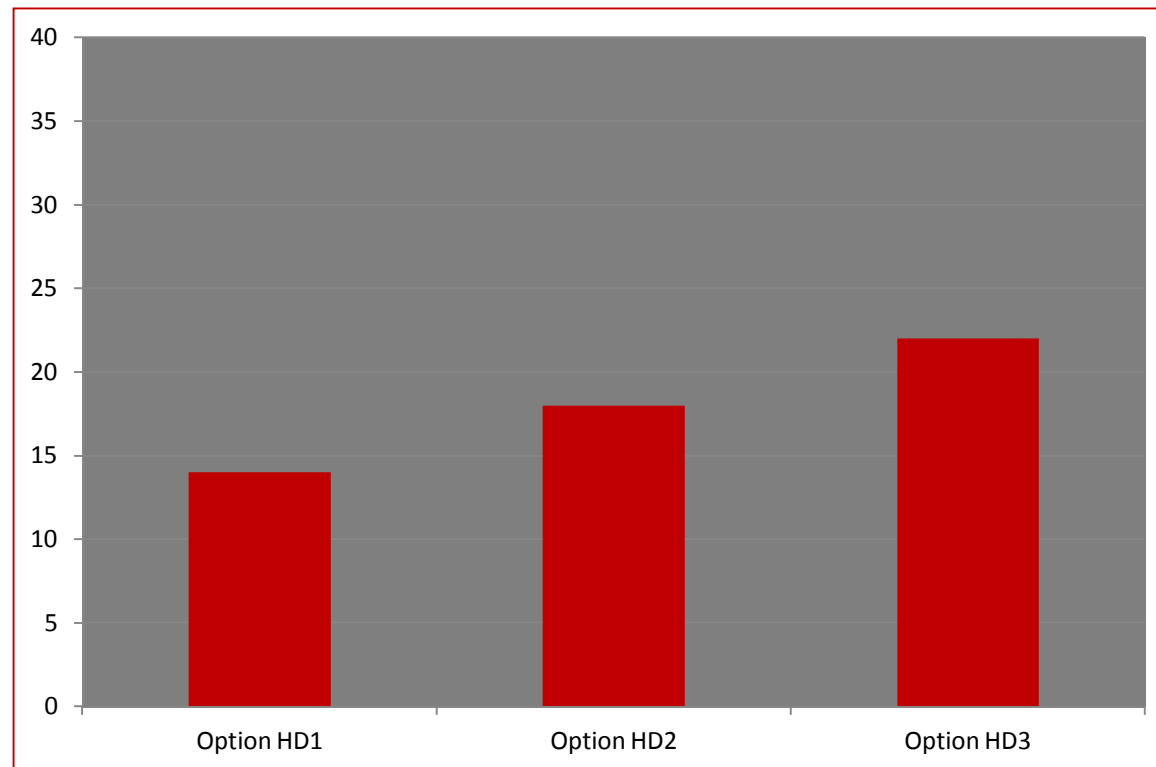
Objective 3 - Manage the provision of housing, including affordable housing, to meet identified needs

3. House Types	
Option HT1	Provide policies to manage the size and type of new houses
Option HT2	Do not include house type policies within the Neighbourhood Plan, leaving market forces to decide types and sizes assessed against the National Planning Policy Framework and the Babergh Local Plan



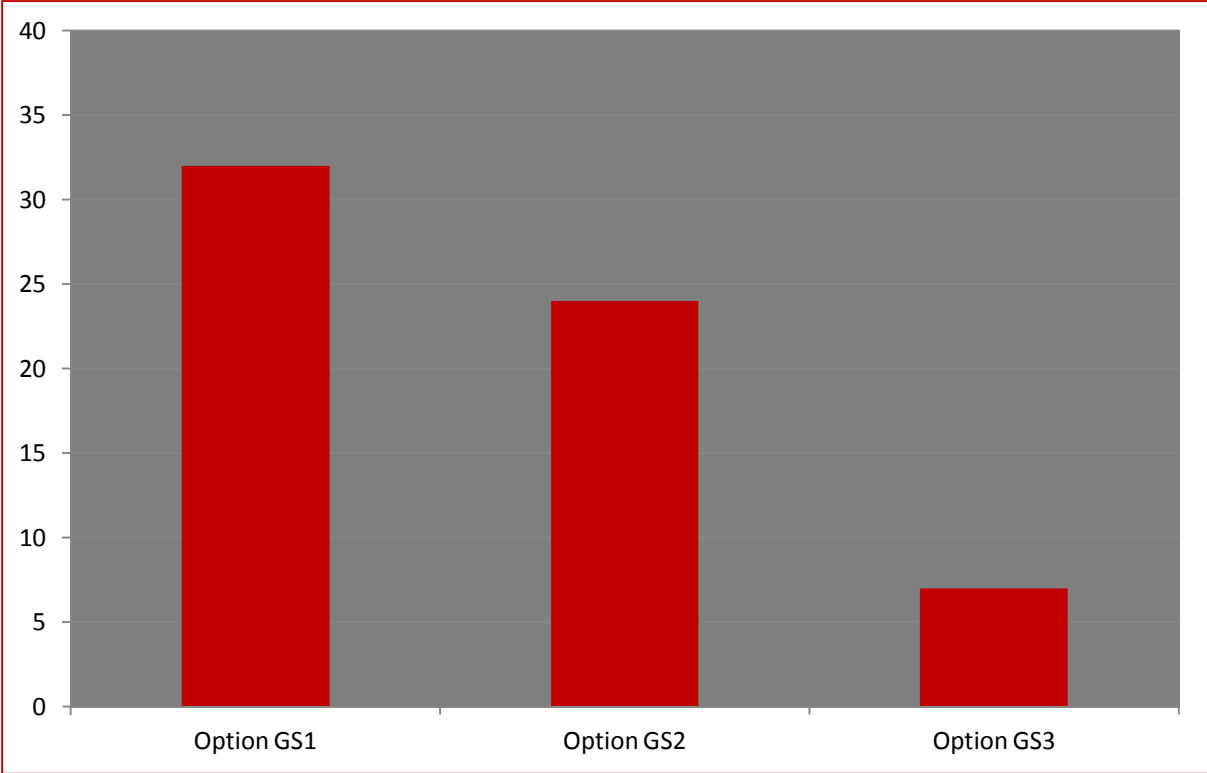
Objective 3 - Manage the provision of housing, including affordable housing, to meet identified needs

4. Housing Delivery	
Option HD1	Identify sites where a Community Land Trust housing development would be the only type of housing that could be built
Option HD2	Allow the market to bring forward sites that accord with the wider policies of the NP
Option HD3	Allocate specific sites where the landowner is willing to bring forward sites and include a site framework to guide the nature and form of the development



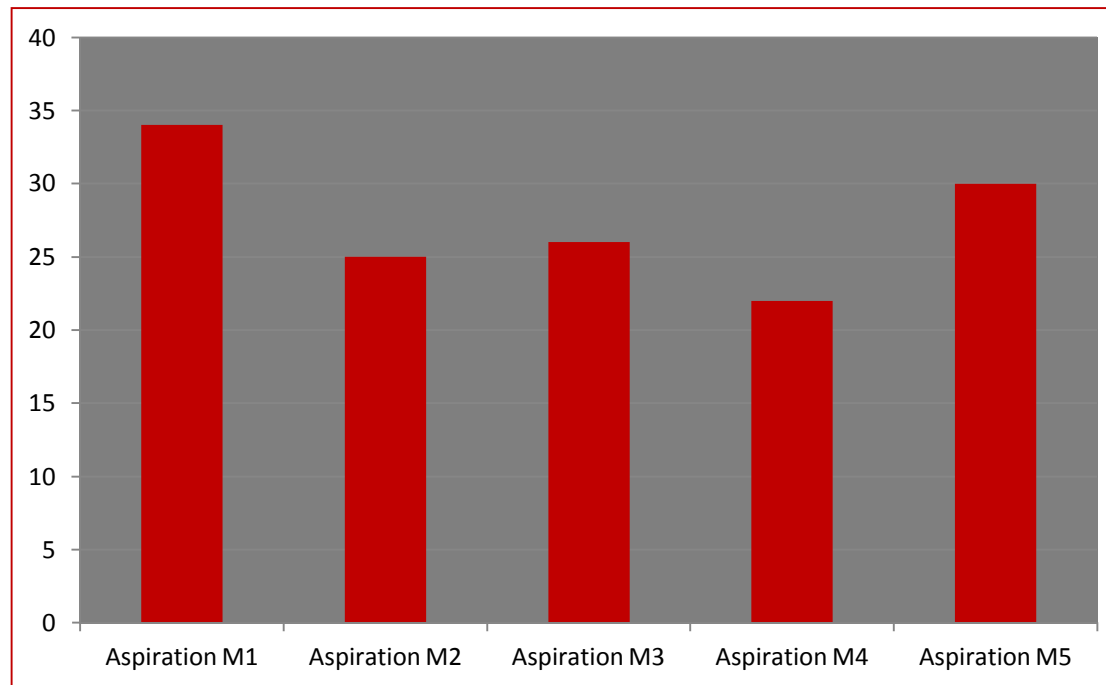
OBJECTIVE 4 - Preserve existing and promote an increase in green spaces and provide better access to them

Option GS1	Identify existing green spaces in the village and protect and enhance them
Option GS2	Require additional green spaces to be provided within any larger housing development
Option GS3	Rely on existing local plan policies and NPPF to protect and deliver additional public open spaces



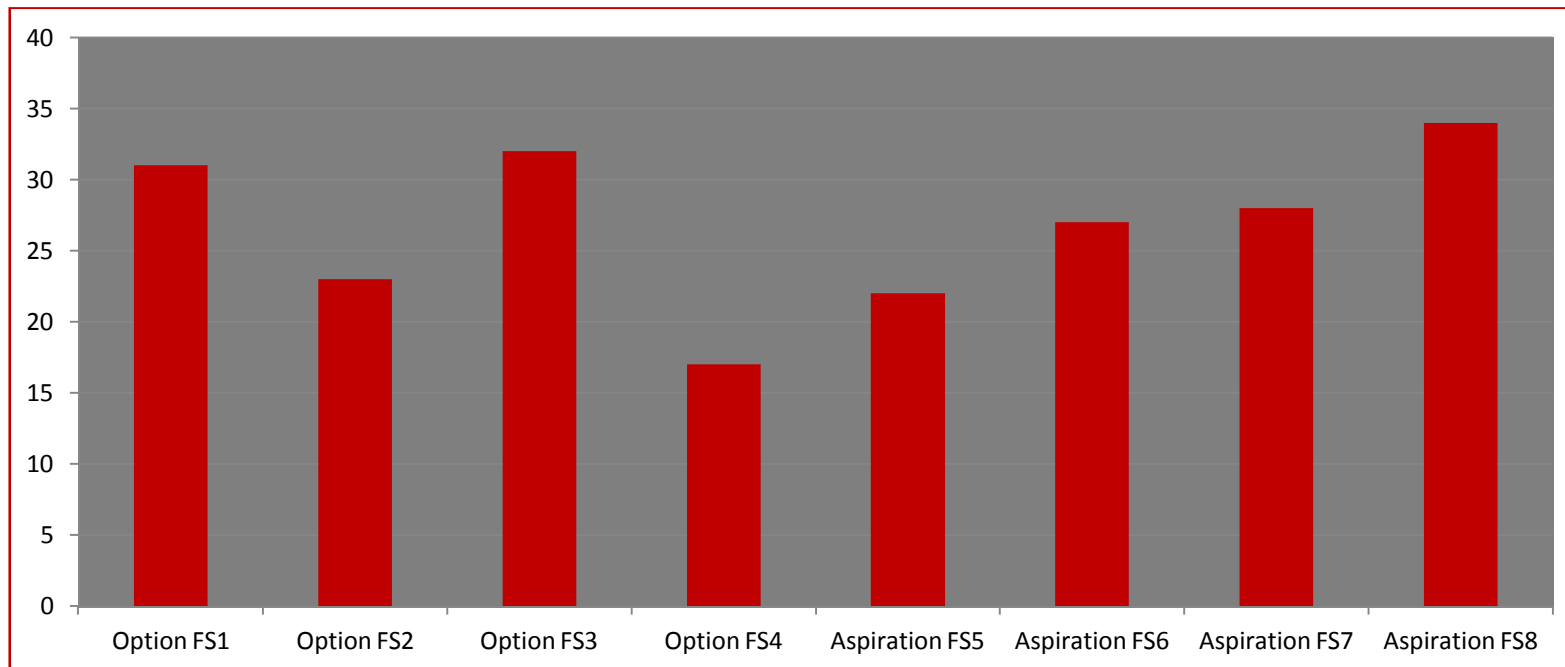
OBJECTIVE 5 - Improve movement to, from and around the village

Aspiration M1	Implement measures that reduce traffic speeds through the village
Aspiration M2	Reduce the impact of roads and associated signs and lines in the conservation area
Aspiration M3	Improve the footway network to link homes to services in the centre of the village
Aspiration M4	Improve the public rights of way network in the parish
Aspiration M5	Improve transport services to nearby towns and villages



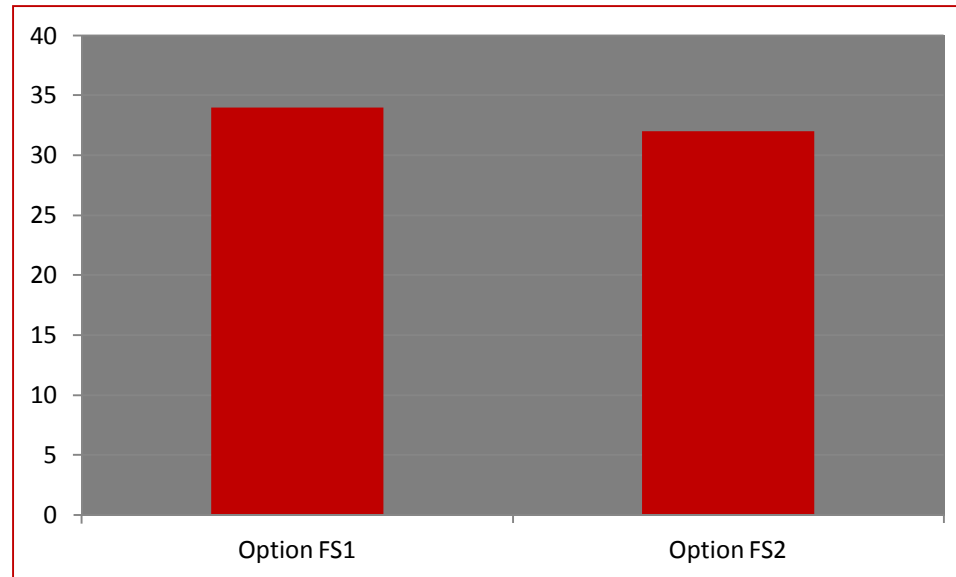
OBJECTIVE 6 - Support and improve the provision of social, community, recreational and other leisure facilities

Option FS1	Seek the retention of existing shops and services (including health and education) in the village
Option FS2	Identify site for new recreation ground to serve the village
Option FS3	Protect site for school playing field provision
Option FS4	Allocate a site or sites for allotments and/or a community orchard
Aspiration FS5	Seek to secure a village playing field for sport and recreation use
Aspiration FS6	Provide a local shop
Aspiration FS7	Seek more use of primary school facilities for community groups and functions
Aspiration FS8	Improve electronic communication infrastructure



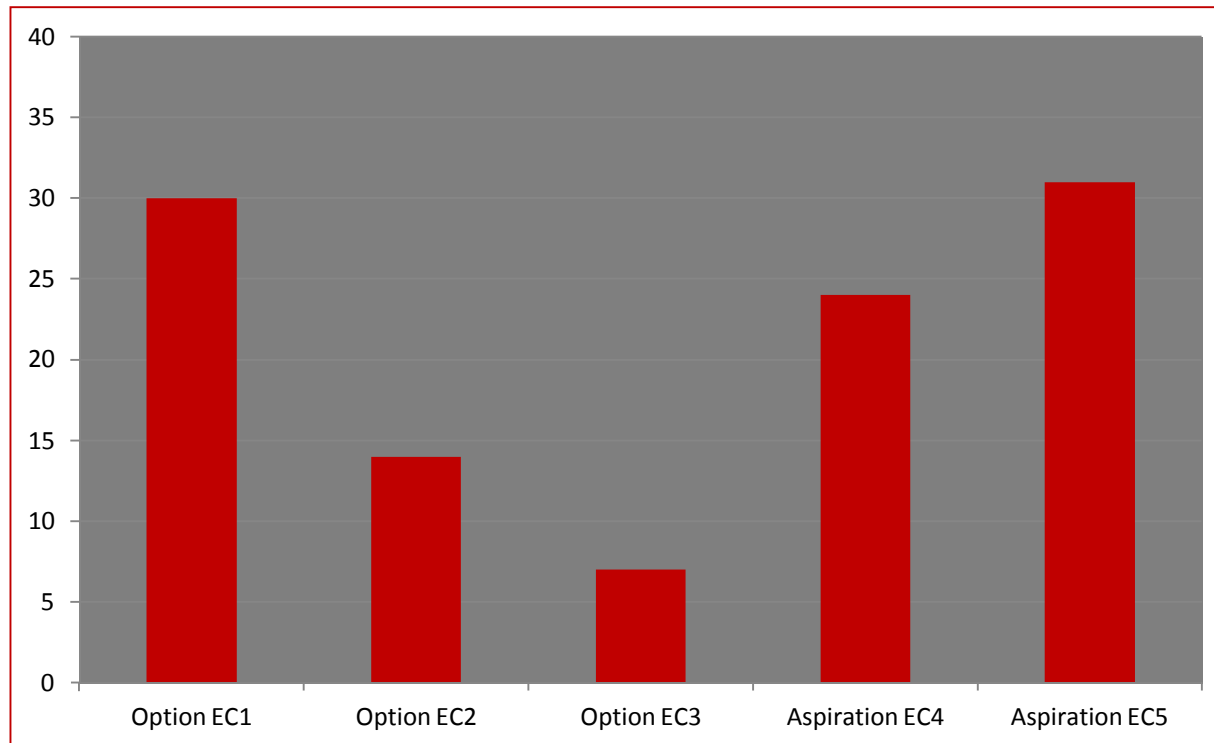
OBJECTIVE 7 - Ensure that the level of services and infrastructure reasonably required to meet the day-to-day needs of the village are available

Option FS1	Seek the retention and expansion of services (including health and education) in the village
Option FS2	Ensure that growth does not take place unless utility services have the capacity to accommodate it



OBJECTIVE 8 - Increase opportunities for local economic investment and growth

Option EC1	Provide positive policies for the provision of employment opportunities in the village
Option EC2	Include a policy for the encouragement of tourism in the village
Option EC3	Rely on existing policies in adopted local plans and the NPPF
Aspiration EC4	Encourage more opportunities for overnight stays in the village
Aspiration EC5	Increase awareness of existing businesses and services available in the village



OBJECTIVE 9 - Develop initiatives that enhance and increase community cohesion

Aspiration CC1	Maintain village newsletter production and distribution
Aspiration CC2	Explore ways in which self-help can be extended in the village for the mutual benefit of residents

